

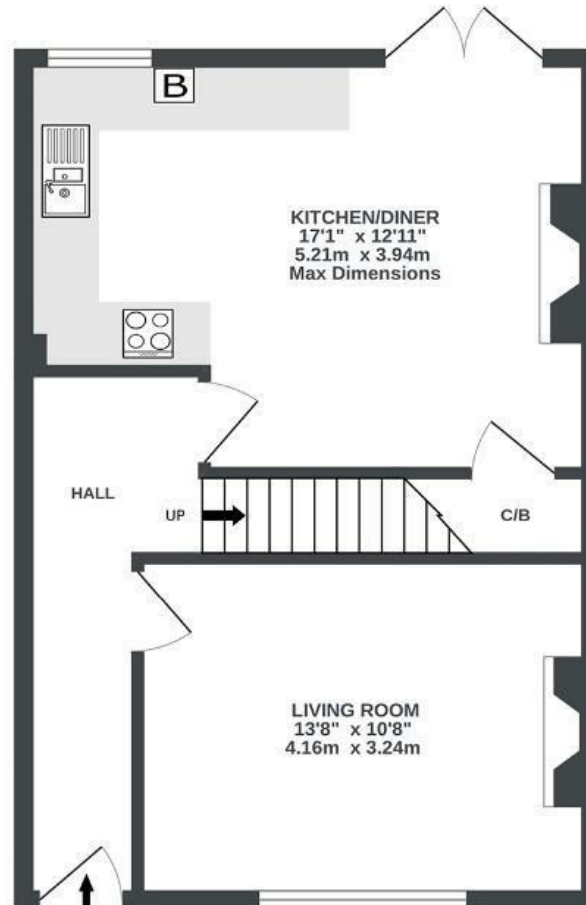
Railway Terrace

FISHPONDS

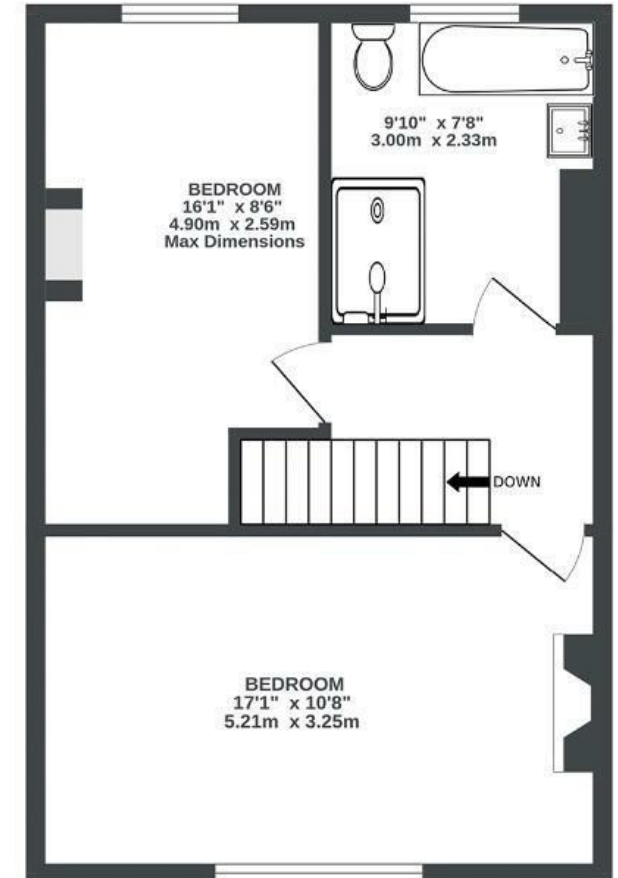
APPROXIMATE FLOOR AREA
81.9 SQM / 881 SQFT



GROUND FLOOR
435 sq.ft. (40.5 sq.m.) approx.



1ST FLOOR
446 sq.ft. (41.4 sq.m.) approx.



Boardwalk

Railway Terrace

FISHPONDS, BRISTOL



£375,000



2 Bedrooms



BS16 4LP



1 Bathrooms

"I was initially attracted to this house, because of its period features and the pretty tree lined road it sits on. The Bath/Bristol cycle path is directly opposite, offering a beautiful outlook onto trees and bushes. I have thoroughly enjoyed refurbishing my home, highlighting features such as the large windows and high ceilings, giving it a light airy feel. My neighbours are super friendly and Page Park has been my favourite place to walk my dog and participate in outdoor yoga!"

